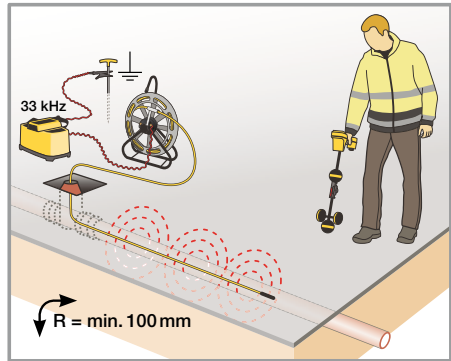
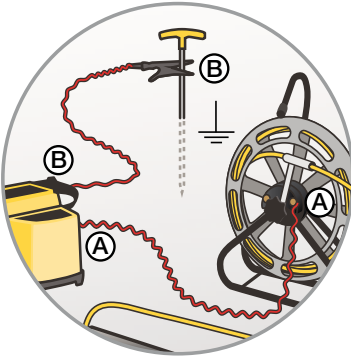


# INT

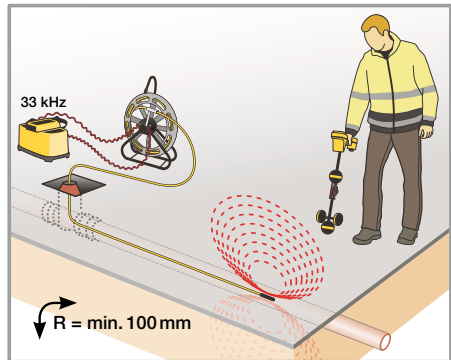
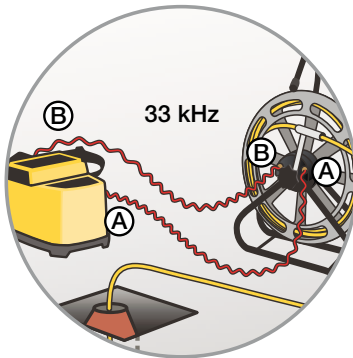
BEDIENUNGSANLEITUNG  
OPERATING MANUAL  
MANUEL D'UTILISATION



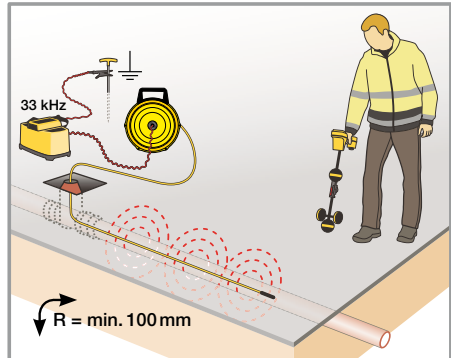
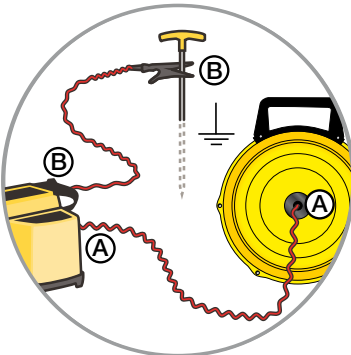
**01. LTS/LTS-S: Streckenortung – Routes detection – Traçage de conduites – Hat tespiti**



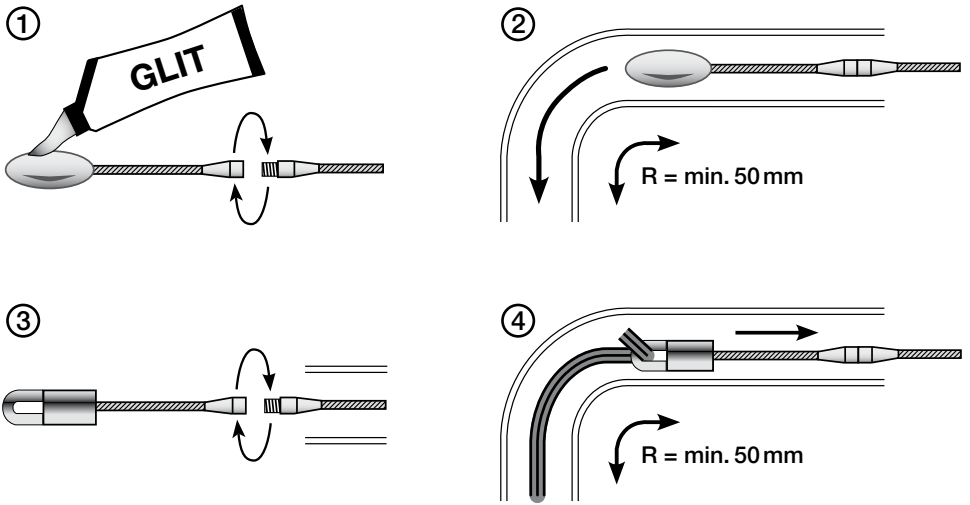
**02. LTS/LTS-S: Punktortung – Pinpoint detection – Localisation de la sonde – Nokta tespiti**



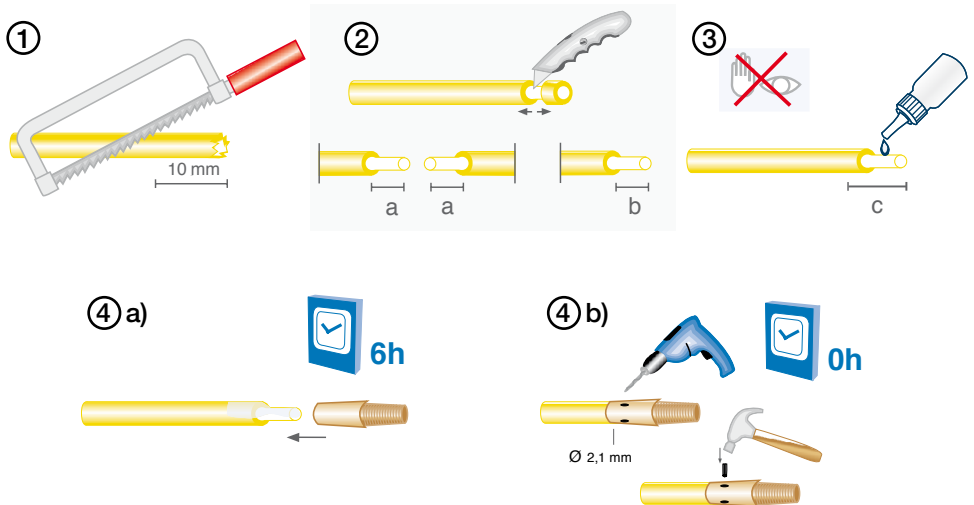
**03. LTC: Streckenortung – Routes detection – Traçage de conduites – Hat tespiti**



**04. LTC: Kabeleinzug – Cable entrance – Passage du câble – Kablo geri çekimi**



**05. LTC: Reparatur – Repair – Réparation – Onanım**



**Trotec GmbH & Co. KG**

Grebber Str. 7  
D-52525 Heinsberg

📞 +49 2452 962-0

☎ +49 2452 962-200

✉ [info@trotec.com](mailto:info@trotec.com)

🌐 [www.trotec.com](http://www.trotec.com)